

CHÂTEAUNEUF-DU-PAPE

CUVEE LE PRESOIR
AOC CHÂTEAUNEUF-DU-PAPE
Red 2016

DOMAINE PATRICE MAGNI

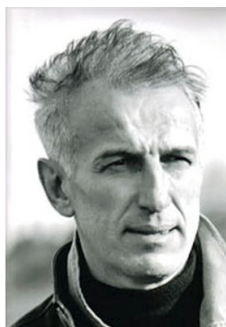
13 ROUTE DE BEDARRIDES
84230 CHÂTEAUNEUF-DU-PAPE

tel : +33 (0)6 89 35 67 22
fax : +33 (0)9 71 70 36 03

mail : domainepatrice.magni@wanadoo.fr

site : <http://www.domaine-magni.com>

Contact : MAGNI PATRICE



VITICULTURE
Conventional

SOILS

Large rounded stones (60%) Sand / Marl (40%)

GRAPE VARIETIES

Grenache noir (60%) Mourvèdre (40%)

WINEMAKING PROCESS

Concrete tank (100%)

Fermentation To C : 28°

Maceration : 30 days

AGEING

Oak Barrels- Old (40%) Concrete tank (60%)



Fédération des Syndicats de Producteurs de Châteauneuf-du-Pape
BP 12 - 25 avenue Général de Gaulle - 84231 Châteauneuf-du-Pape Cedex
www.chateauneuf.com - www.vinadea.com

26/02/2019

The alcohol abuse is dangerous for health, consume in moderation

